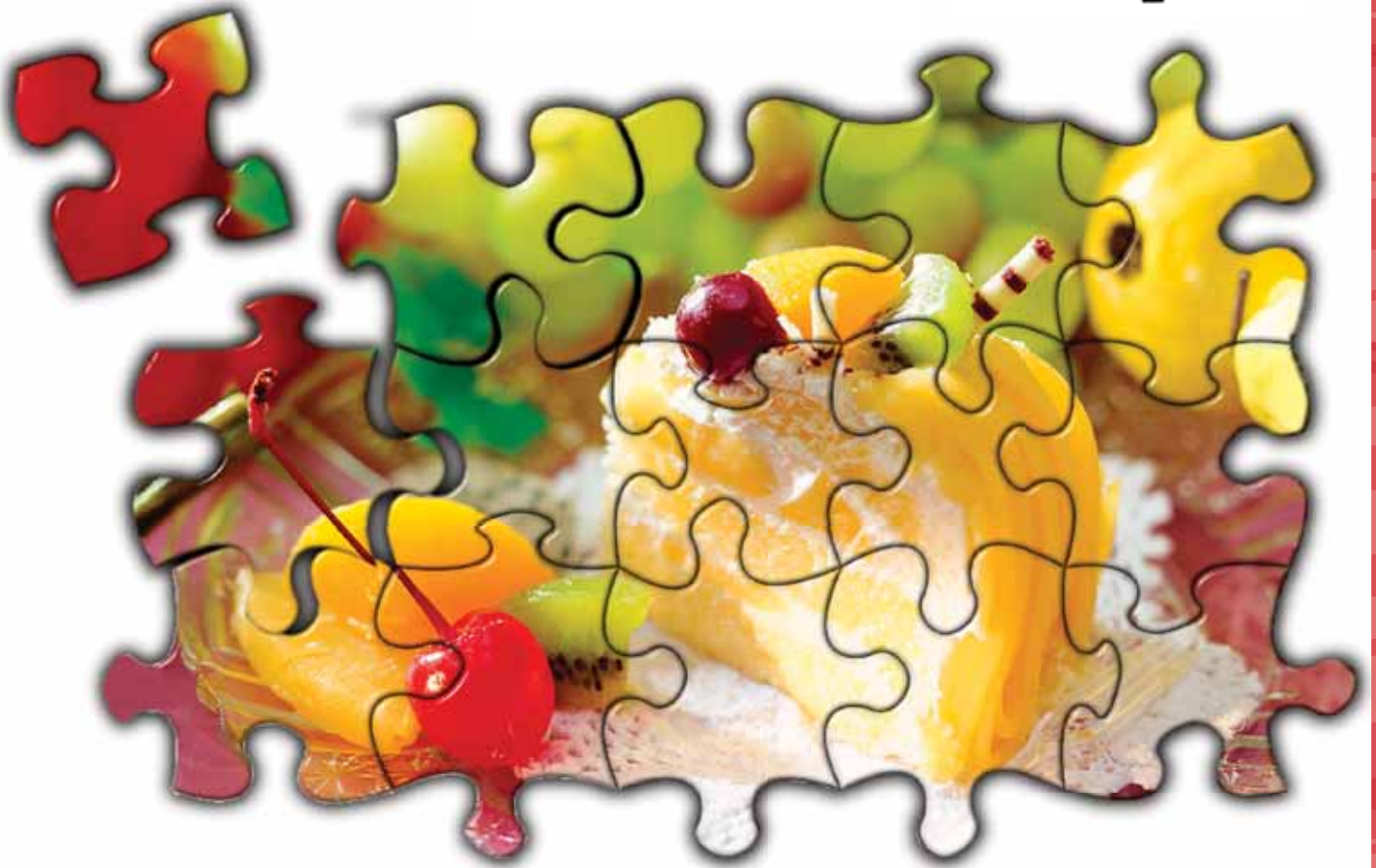




# RM-5800

POS Scale

Powerful partner in your retail business



*Searching for  
a New Balance*

## RM-5800 Series



## Basic Specifications

Model	RM-5800B	RM-5800B-Promo	RM-5800H	RM-5800H-Promo
Capacity		3/6kg	6/15kg	15/30kg
Interval		1/2g	2/5g	5/10g
CPU	1.6GHz N2600			
Memory	DDR3 2G			
HDD	2.5" SATA HDD 320G, SSD 32G or SD card			
OP Display	12.1" TFT-LCD with Touch panel			
Cust Display	LCD(202X32)	Promo 9"TFT	LCD(202X32)	Promo 9"TFT
Printer	Thermal printer, Paper Width: Max 60mm, Printing Speed: 80mm/sec			
I/O	1x LAN(from CV05) 2x USB(CV05-USB3/4) 1x RS232(CV05-COM5), 1x RJ9 Cash drawer			
Power Source	AC 88 ~ 132V, 50/60 Hz (Factory preset)		AC 176 ~264V, 50/60 Hz (Factory preset)	
Operating Temperature	-10 ~ +40			
Operating Humidity	15% ~ 85% RH			

Model	RM-5800EVEL	RM-5800EV	RM-5800EV-PLUS
Capacity	3/6kg	6/15kg	15/30kg
CPU	N2600 1.6GHz		
Memory	DDR3 2G Memory		
HDD	2.5" SATA HDD 320G, SSD 32G or SD Card		
OP Display	12.1" TFT-LCD with Touch panel*		
Cust Display	10" full transparent display with pixel 256 x 120	LCD(202X32)	12.1 TFT
Printer (1)	Thermal printer Paper width: Max60mm Print speed: 80mm/s		
(2)	Thermal printer with Auto-cutter Paper width: 80mm		
I/O	1 xETHT, 1 xRS232, 1 xRJ9 Cash drawer, 2 xUSB		
Embedded OS	Win7, Win XPE, WinCE, Linux		

\*1024 x 768 or 800 x 600 Pixel screen are selectable.  
\*Specifications are subject to change without prior notice.

### TERAOKA SEIKO CO.,LTD.

13-12 Kugahara 5-Chome, Ohta-ku,  
Tokyo 146-8580, JAPAN  
TEL: +81-3-3752-2131  
FAX: +81-3-3752-2801  
URL: <http://www.digisystem.com>  
E-MAIL: [info@digi.jp](mailto:info@digi.jp)

### SHANGHAI TERAOKA ELECTRONIC CO., LTD.

Tinglin Industry Developmental Zone,  
Jinshan District, Shanghai 201505  
TEL: +86-21-57234888  
FAX: +86-21-47233049  
<http://www.digisystem.com>