



Full Graphic 7" Display



## Network Printing Scale

# CN1SERIES

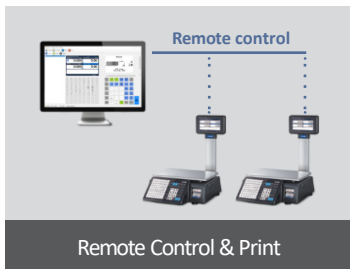


After CN-1



## Network Printing Scale

Introducing the first product of the new CN series, CN1. CN stands for "CAS NETWORK" and is a printer scale lineup with enhanced network functionality. Provides robust remote functionality based on enhanced networks. Provides robust remote functionality based on enhanced networks. Improved information transfer capability with 7" color display. Also, the main features and products of the existing CL series are compatible.



Remote Control & Print



Remote Firmware Update



7" Vivid Color Display



CL Series Compatible



# CN1SERIES

## Overview



### Display

7" color display  
800 X 480 pixels  
16.7M Colors,TN screen

### Body

Dark Gray ABS material upper  
body Die-casting aluminum body  
secures stable weighing  
performance.

### Keyboard

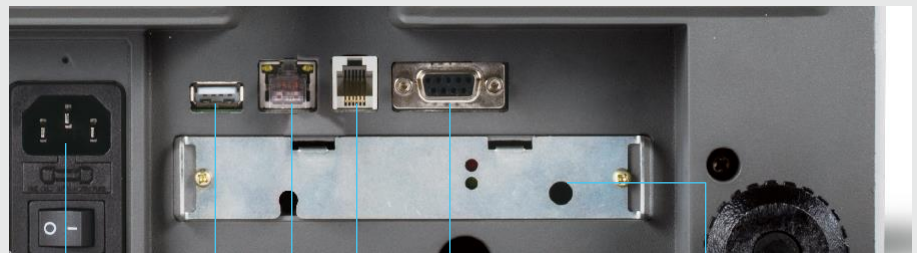
The push feedback is clear  
(polydom type) PLU 72 Key  
Function 36 Key

### Printer

100mm/sec speed Label  
width 60mm length  
maximum

## Interface

- 1) USB Port for barcode scanner, keyboard, PC
- 2) LAN for weighing network system
- 3) RJ11 for cash drawer
- 4) RS-232C for external printer, PC
- 5) Wireless LAN for Wi-Fi (optional)



Power

USB Host

LAN

RJ11

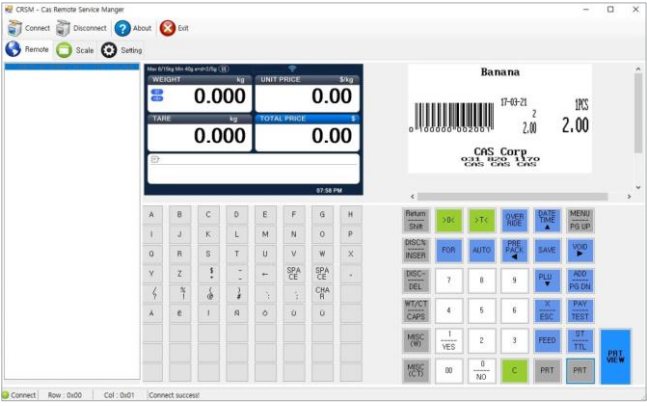
RS-232C

Wireless LAN



## Remote Control & Print

CN1 remote software allows you to connect the CN1 scale remotely to check the status and check whether the scale is malfunctioning. In addition, it includes remote printing, which allows you to view actual CN1 printed images remotely.



## Remote Firmware Update via ethernet

CN1 products can be updated firmware remotely when connected to wired and wireless Ethernet. Firmware updates can be easily installed by connecting RS-232C or USB flash drives as before.



## 7" vivid color display

Display resolution is 800 x 480, which accurately displays product information and is easy to use as a UI considering users.



## ???

### Features

- Durable printer mechanism
- Firmware update via RS-232C or USB port
- Interface: USB port, LAN, RJ11, RS-232C, optional wireless
- Compatible with CL series
- CL-Works Pro (PC Management Software)

### Application

- Supermarkets
- Grocery Stores
- Butcher Shops

## PLU and Programmable Function Keys

72 PLU Keys and 36 Function Keys are available. For convenience, the CL3000 Label Printing Scale can store up to 10,000 PLU. Quickly transfer PLU data via Wi-Fi or RS-232C for scale to computer or computer to scale.



## ■ Specification

MODEL	CN1			
Max. Capacity	6/15 kg	15/30 kg	15/30 lb	30/60 lb
Interval	2/5 g	5/10 g	0.005/0.01 lb	0.01/0.02 lb
Max. Tare	-5.998 kg	-9.995 kg	-9.995 lb	-29.99 lb
A/D Conversion Rate	Approx. 8 times/sec.			
Measurement Type	Load Cell			
Platter Size	380 x 250 mm			
Key	72 PLU key, 36 function key, 144 PLU			
Display	7" color display(800 x 480)			
Printer	Speed 100 mm/sec			
Printing Resolution	202 dpi			
Label Size	Width : 40 mm ~ 60 mm / Length : 30 mm ~ 290 mm			
Barcode Type	UPC, EAN13, I2OF5, CODE128, GS1 databar, QR code			
Printer Type	Direct thermal print			
Operating Temp.	-10 °C ~ 40 °C (14 °F ~ 104 °F)			
Power	AC 100 - 240V 50/60Hz 1.5A			

## ■ Dimension

