

43" High Brightness Outdoor Digital Android Battery A-Boards



Sunlight readable and fully portable solution for any space; display content all day and night from a single charge.

1,500cd/m² Sunlight Readable Displays

These displays strike the perfect balance between brightness and battery life. With a high brightness blackening resistant panel (1,500cd/m²) which is up to five times brighter than a domestic TV, the screen is clearly visible in outdoor spaces without compromising on running time or battery lifespan.

Portable Lightweight Enclosure

With a moulded polymer rear these displays are incredibly lightweight and this, along with their rugged castors, means they can easily be moved by one person. The specialised castors are designed to minimise vibrations on uneven surfaces, protecting the internal components for a longer product lifespan.



IP65-Rated Enclosure



27 Hour Running Time*



Android 14 Media Player



1,500cd/m² IPS Panel



Wide Viewing Angle



Robust Fixed Design



Locking Bar



Ambient Light Sensor



Ultra Resistant to Blackening Defect (up to 110°C)



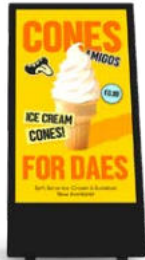
Isolated Battery Housing

*LCD panel supports up to 110°C

Other Features

Tempered Anti-Glare Glass

These displays feature a tempered glass front that has been specially treated to give an anti-glare finish. This completely diffuses external light reflections without reducing the brightness of the screen, improving the readability of on-screen content.



Fully Weatherproof

Designed to withstand the elements, these displays are protected against all wet weather conditions and airborne dust particles by their robust IP65-rated outer casing. This means they can be used in any environment, come rain or shine.



Protection from the weather!



Battery-Powered Display

The integrated lithium-polymer battery offers an amazing 27 hours run time from a single charge*, allowing you to display messaging all day and night without needing to recharge. A secure housing safely isolates this commercial grade battery from other components for total peace of mind.

27 Hours Runtime*
(8 Hour Charge)



*Based on average running time, subject to variation. Excludes degradation and user damage caused by sulphation, deep cycling, and overcharging.

Intelligent Temperature Control System

Our innovative design incorporates specially engineered low-power fans and strategically positioned ventilation holes to efficiently cool the high brightness panel and internal components, ensuring optimal running temperatures that maximize battery running time and product longevity.



Integrated Android 14 Media Player

The integrated Android 14 media player allows you to easily update on-screen content via USB plug and play. Alternatively, upgrade your screen to be networked without needing any additional hardware to unlock our cloud-based CMS software. Third-party software can be installed instead if required.



Secure Locking Bar

Once in position, the rugged castors can be locked in place with the built-in locking bar. For additional security, a padlock can be used to lock the bar in place.



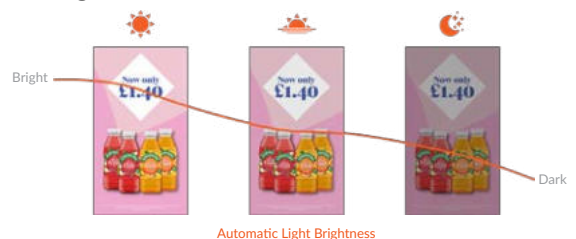
Charge Level Indicator

The smart meter on the rear of the display tells you exactly how much charge the left battery has left, including an estimation of running time remaining, so you can rest assured that the battery will never die unexpectedly.



Ambient Light Sensor

Thanks to the built-in light sensor, the brightness of the screen will automatically change depending on the ambient conditions. This ensures these displays are always operating at the most suitable brightness for their environment, as well as maximising the running time.



Key Features



1,500CD/M²
HIGH BRIGHTNESS



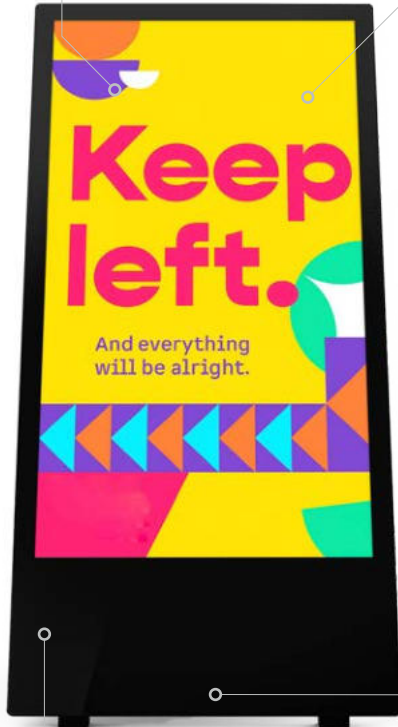
TEMPERED
ANTI-GLARE GLASS



INTEGRATED
ANDROID 14 MEDIA PLAYER



OPTIONAL
NETWORK UPGRADE



TEMPERATURE CONTROL SYSTEM

AMBIENT LIGHT SENSOR

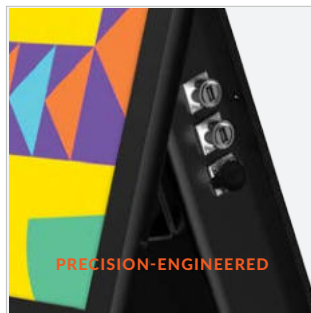
ULTRA RESISTANT TO
BLACKENING DEFECT*

LOCKABLE RUGGED CASTORS



27 Hrs*

BATTERY POWERED



PRECISION-ENGINEERED



WEATHERPROOF
IP65-RATED ENCLOSURE



CHARGE LEVEL INDICATOR

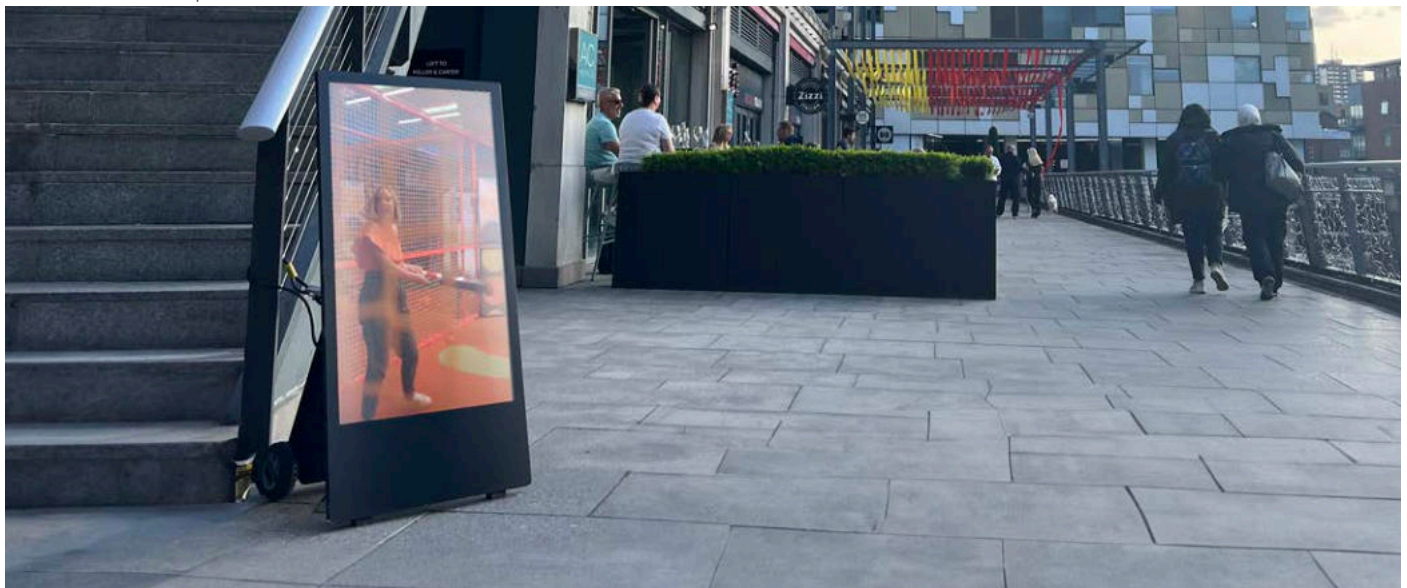
*LCD panel supports up to 110°C

Specification Table

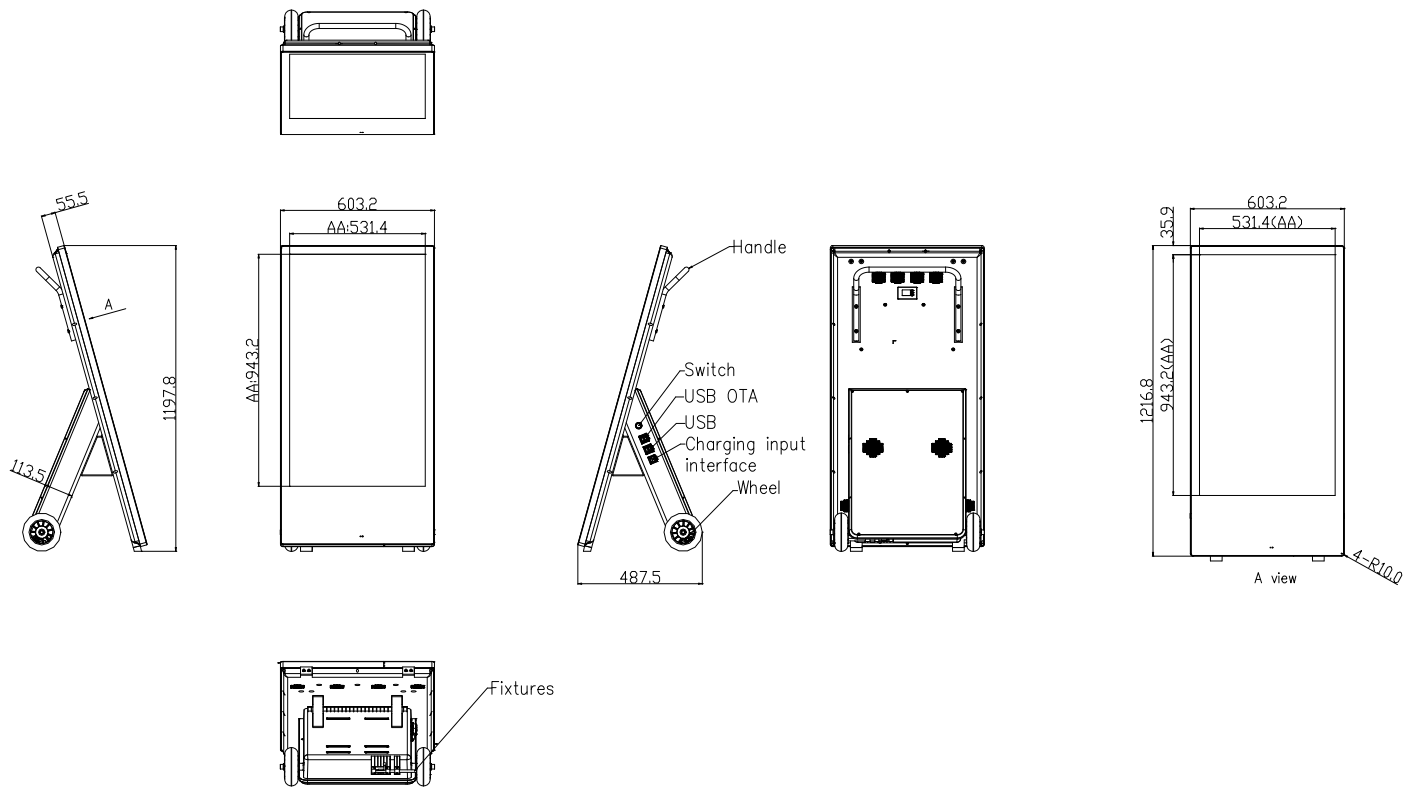
		43 Inch
Panel	Resolution	1920x1080
	Display Area (mm)	531.4x943.2
	Aspect Ratio	16:9
	Brightness (cd/m ²)	1,500
	Colour	16.7M
	Viewing Angle	178°
	Contrast Ratio	1,200:1
Audio	Speaker Type	58, 8Ω (x2)
Battery	Battery Technology	Integrated lithium polymer
	Charging Time	8 hours
	Battery Life	27 hours*
	Battery Capacity	56800mA
	Power Supply	29.2V - 21.2V
	Power Consumption (Max)	121W
Mechanical	Unit Size (WxHxD mm)	1197.8x603.2x487.5
	Package Size (WxHxD mm)	1430x753x643
	Footprint (WxD mm)	603.2x487.5
	Net Weight (kg)	46.2
	Gross Weight (kg)	62
Environmental	Operating Temperature	0°C to 40°C
	Storage Temperature	-10°C to 55°C
	Operating Humidity	10% to 80%
	Storage Humidity	10% to 80%
Computer	Media Formats	Video (MPG, AVI, MP4, RM, RMVB, TS), Audio (MP3, WMA), Image (JPG, GIF, BMP, PNG)
	Media Resolution	1920x1080/1080x1920
	Internal Storage	32GB
	CPU	ARM Cortex-A55
	GPU	Mali-G52
	RAM	4GB DDR3
	USB	USB2.0 HOST (x1), USB3.0 HOST (x1)
	LAN	10/100Mb/s Ethernet
	Wi-Fi	802.11b/g/n/ac
	Bluetooth	Bluetooth 4.2
	OS	Android 14
Accessories	Graphic Engine	Quad-core Mali-G52 2EEOpenGL ES 1.1/2.0/3.2, OpenCL 2.0, Vulkan 1.1
	Included	Scheduling Software, Remote Control, User Manual, Charger, Mains Power Cable
	Optional	Network Upgrade, Security Chain
Warranty	Warranty Period	3 Year Warranty
	Warranty Period (Battery)	3 Year Warranty*
	Technical Support	Lifetime

Errors and omissions excepted

*Based on average running time, subject to variation. Excludes degradation and user damage caused by sulphation, deep cycling, and overcharging.



Technical Drawing

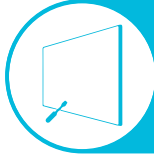


Why Choose Our Commercial Display Solutions?



Lifetime Technical Support

From the moment you receive your product, throughout the duration of your warranty and even after your warranty has expired we are here to support you. If you require any assistance setting up or using your product, or have any problems at all, we can provide free technical support via telephone and email.



On-site Support and Maintenance*

If needed, we can provide an installation service for any of our products. We can also set up service-level agreements for larger projects that require maintenance contracts.



Extended Warranty*

All of our commercial display products come with a 3 year commercial warranty as standard but if you want to extend this you can upgrade this to cover a 5 year period at point of purchase.



Training

As well as providing free remote CMS training sessions and webinars we can also visit you to deliver bespoke training for our software and hardware*.



Advanced Replacements†

Should your display suffer from any kind of hardware failure during the warranty period we will send you an advanced replacement and arrange for your old display to be collected, free of charge. This ensures no downtime where you are without a screen.



Custom Product Testing & Configuration

If you need us to test third party software or a website, or configure your screen in a particular way before it is dispatched (e.g. in a particular orientation or network mode), we can do so to make your life easier.



3D Rendering

Want to know how a particular screen will look once installed? Send us a photo of the location and we will create a 3D rendering of any screen in situ to help you to visualise how amazing it will look.



Logistics Support

We hold more stock in our UK warehouse than any other manufacturer so we can help you meet tight deadlines. For last minute orders we can also offer special express or morning delivery options*. We also carry out UK based quality control checks on every display before it leaves our warehouse.



Project Support

If you need to loan a sample unit to test we'd be more than happy to arrange this. We can also provide a rental service for temporary projects*.



Customisation*

Your display can be customised to suit your requirements by adding your logo or printed graphics or even tailoring the colour of a display. We can also carry out hardware modifications to existing products or manufacture bespoke solutions for special projects.



Extras*

As well as being able to provide accessories and add-ons, such as extra remote controls, NUC PCs and video wall controllers, we can also supply custom made flight cases which are great if a display needs to be moved safely from place to place.

†UK mainland only

*These particular services may incur additional charges