

Powerful functions which are vitalizing the space style

New No Name 2 Now with N-97 high speed CPU

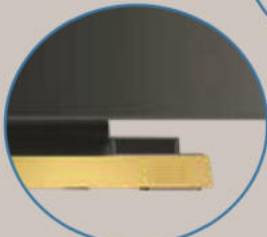
- Luxurious metallic stand by new style
- Stable performance which is proved by strict test
- All-in-one ventilation frame structure which has high heat-treatment ability (No noise, Low heat Fanless)
- Faster and more accurate capacitive-flat typed multi(10-point) touch screen
- More convenient and easier installation structure by top I/O panel location
- Diverse I/O ports to connect many types of devices
Serial x 6(DB9x3, RJ50x2, RJ1 1x1), Parallel x 1, USB x 6
- Powerful functions of 8th generation's i3/i5/i7 processors or reasonable priced Intel® Celeron Processor can be chosen



Silver & Black metallic frame typed stand is providing more sophisticated feeling and stability at the same time. Completeness of design was much more enhanced by the unity of front and rear parts, differentiated brand value can be created by adding brand logo.



Slim body, Flat Touch Screen
Capacitive-flat typed multi(10-point) touch screen



Diverse ports for additional devices



Enough spaced I/O panel design which is considering cable connection convenience

Rear top I/O panel



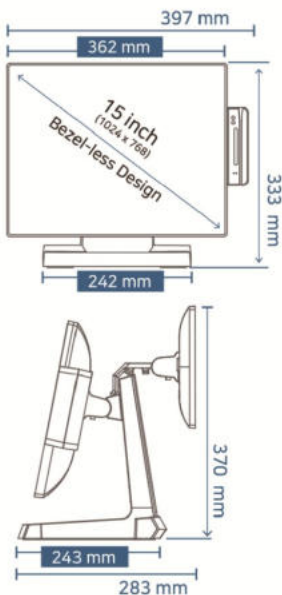
Rear bottom I/O panel



I/O Ports

- | | | |
|------------------------|-----------------|-----------------|
| 1 Serial (COM1) | 2 Serial (COM2) | 3 Serial (COM3) |
| 4 DP Port | 5 DC 12V | 6 LAN |
| 7 USB 1 / 2 | 8 Serial (COM4) | 9 Serial (COM5) |
| 10 Serial (USB / COM6) | 11 SSD (HDD) | 12 Audio |
| 13 USB 3 / 4 | 14 USB 5 / 6 | 15 LPT |

Dimension



Specifications

Model	S-200P	J-200P	G-200P
System			
Processor	7th or 8th Generation Intel® Core™ i3, i5, i7 Processors	Intel® Celeron™ Quad-core Processors J1900 2.0GHz	Intel® Celeron® Quad-core Processor J4125 2.0GHz/2.7GHz
Chipset/BIOS	Intel® Kaby Lake SoC / AMI	Intel® Bay Trail SoC / AMI	Intel® Gemini Lake SoC / AMI
Storage	2.5" SSD 64GB(SSD 128GB/HDD 500GB, Optional)		
Memory	4GB, DDR4 2133MHz x 2 (Max 32GB, optional)	2GB, DDR3 1333MHz x 1 (Max 8GB, optional)	4GB, DDR4 2400MHz x 1 (Max 16GB, optional)
Graphics	Intel® HD Graphics 520 / Intel® HD Graphics 620	Intel® HD Graphics	Intel® UHD Graphics 600
Expansion Slot	1 x mini PCI-e		1 x m.2 NVMe, 1 x m.2 WiFi & Bluetooth (optional)
Multi Mointor	3 (# of Displays Supported) - up to 3 monitors (optional)	2(# of Displays Supported)	3 (# of Displays Supported) - up to 3 monitors (optional)
OS	Windows 10 IoT Value/High End	Windows 10 IoT Entry	
Display & Touch			
Display Type	15" LCD with WLED backlight(1024 x 768 resolution)		
Touch	True-Flat Capacitive 10 Point Multi-Touch		
I/O Interfaces(Rear Top & Bottom Ports)			
USB(5 V ⁺ , 0.5 A)	6 x USB 3.0 (Rear Top x 2, Rear Bottom x 4), 1 x USB 2.0 (RJ11)	6 x USB 2.0 (Rear Top x 2, Rear Bottom x 4), 1 x USB 2.0 (RJ11)	4 x USB 3.0 (Rear Top x 2, Rear Bottom x 2), 3 x USB 2.0 (Rear Bottom x 2, RJ11)
Serial	6(DB9 x 3, RJ50(RJ45) x 2, RJ11 x 1) COM1, 3, 5(DB9): +5V on Pin #9, Selectable by BIOS COM2, 4 (RJ50, RJ45): Support +5V and 12V for Special Devices and can be used for Kitchen Printer COM6(RJ11): USB 2.0 and RS232 with +5V/1A for Card Reader		
LPT(Parallel)	1(LPT / DB25 on Rear Bottom)		
Audio	1 x Audio-out / 3.5mm(Changeable for MIC)		
Display Port	1 x DisplayPort(Included 1 x USB 2.0 / Power Delivery +12V) * Can be used for HDMI and DVI, VGA Monitor by Converter Cable.		
LAN	1 x RJ45(Base-T 10/100/1000 Ethernet)		
Peripheral Options			
2nd Display	Display Type: 9.7" or 15" LCD(1024 x 768 Resolution) Touch Display Type: 9.7" or 15" LCD with Capacitive Touch and support 1 x USB 2.0 Port * P2C Display Functions: Supported Multi Display Function by DP MST Hub/Supported Standard HDMI, DVI DP by each Cable		
Customer Display(CDP)	VFD Type(Alphabet & Numeric, 20 Characters x 2 Lines)		
Card Reader (MSR/SCR)	Smart Card Reader: ISO/IEC7816 EMV Level 1 Magnetic Stripe Reader: ISO 7811 ID-1 All Tracks * Interface: USB(HID) and RS232C(COM6)		
Dallas Reader	Dallas Reader(i-button): 6 Characters/Prefix and Suffix * Interface: USB(HID) and RS232C(COM6)		
Physical Dimension			
Dimnrsion(W x D x H)	362mm x 237mm x 336mm		
Weight	5Kg		
Environment			
Power Supply	DC 12V/5A (AC 100V~240V, 60W)		⎓ : Direct Current (D.C.)
Temperature	Operating: 0~50°C at 10% to 90% Humidity		
Certifications	CE, CB, FCC, KC		



This leaflet is provided for informational purposes only, under copyright laws, reproduction, distribution is prohibited. The contents of this manual are subject to change without prior notice.

Peripheral Options



MSR/SCR/Dallas Key



Customer Display (VFD)



2nd Dispalry - 10", 15"